

CONCENTRICITY

IN ROTARY DRUMS



Concentricity of the drum shell and tires (riding rings) is a critical aspect of **maximizing rotary drum life**.

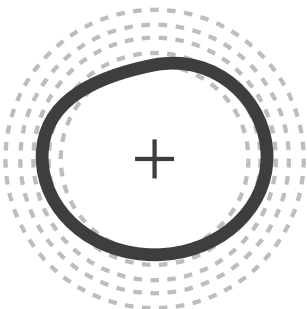
SIGNS OF A DRUM OUT OF CONCENTRICITY



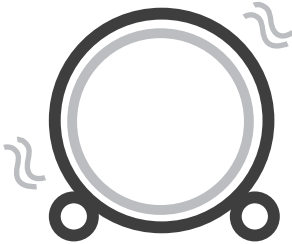
CRACKS IN SHELL



CRACKS IN TIRE



WOBBLE DURING
ROTATION

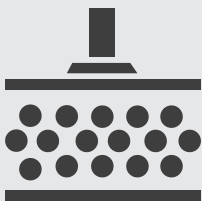


VIBRATIONAL NOISES
DURING ROTATION

FACTORS THAT INFLUENCE CONCENTRICITY



SHELL THICKNESS



MANUFACTURING
TECHNIQUES



OPERATING
CONDITIONS



MATERIALS OF
CONSTRUCTION

BENEFITS OF CONCENTRICITY



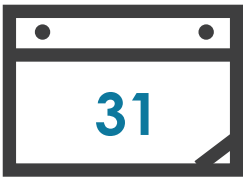
SMOOTH ROTATION
WITH MINIMAL NOISE



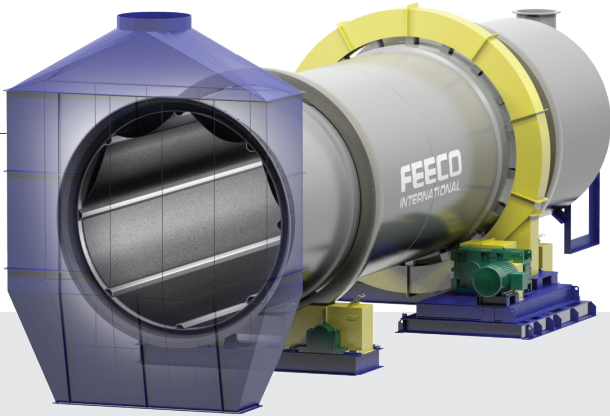
LONGER
EQUIPMENT LIFE



LONGER
TIRE LIFE



REDUCED
MAINTENANCE



FEECO ROTARY DRUMS

FEECO manufactures the world's most reputable rotary drums. All FEECO drums are manufactured according to stringent quality control standards, concentricity included, for long-term reliability. For more information about our rotary drums, contact us today at **FEECO.com/contact**